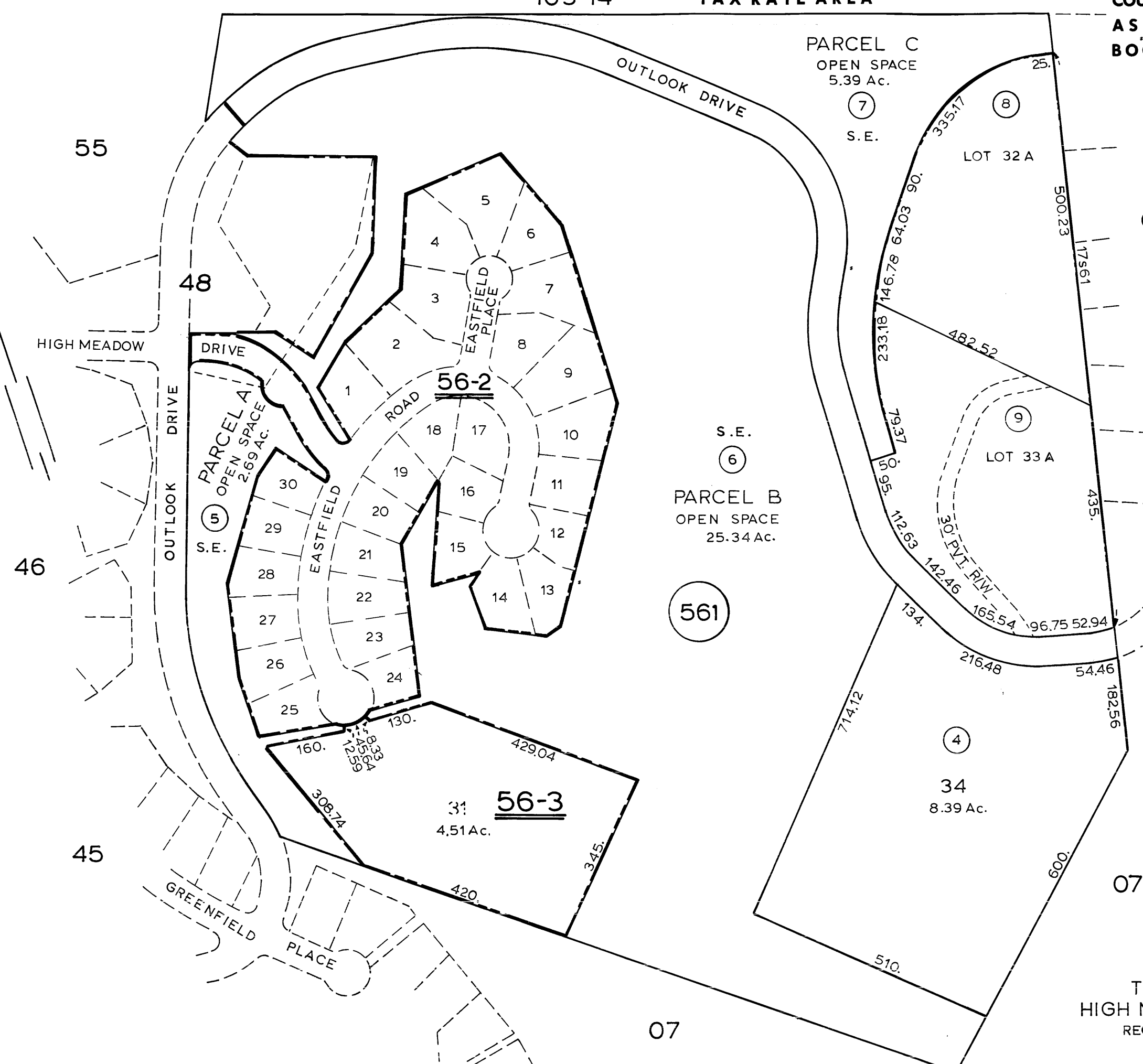
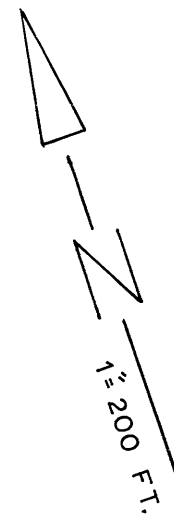


NOTE:
S.E.
SCENIC EASEMENT
MONTEREY COUNTY
REEL 1934 PAGE 547



55

46

45

48

07

03

07

TRACT 1030
HIGH MEADOW NO 2
RECORDED 3-11-86

PARCEL C
OPEN SPACE
5.39 Ac.

(7)
S.E.

(8)
LOT 32 A

S.E.
(6)
PARCEL B
OPEN SPACE
25.34 Ac.

(561)

(9)
LOT 33 A

(4)
34
8.39 Ac.

56-2

56-3

PARCEL A
OPEN SPACE
2.69 AC.
(5)
S.E.

HIGH MEADOW DRIVE

OUTLOOK DRIVE

OUTLOOK DRIVE

EASTFIELD PLACE

EASTFIELD ROAD

GREENFIELD PLACE

OUTLOOK DRIVE

OUTLOOK DRIVE

1" = 200 FT.

PARCEL A
OPEN SPACE
2.69 AC.
(5)
S.E.

PARCEL C
OPEN SPACE
5.39 Ac.

(7)
S.E.

(8)
LOT 32 A

S.E.
(6)
PARCEL B
OPEN SPACE
25.34 Ac.

(561)

(9)
LOT 33 A

(4)
34
8.39 Ac.

56-2

56-3

PARCEL A
OPEN SPACE
2.69 AC.
(5)
S.E.

HIGH MEADOW DRIVE

OUTLOOK DRIVE

OUTLOOK DRIVE

EASTFIELD PLACE

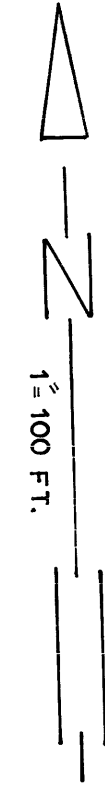
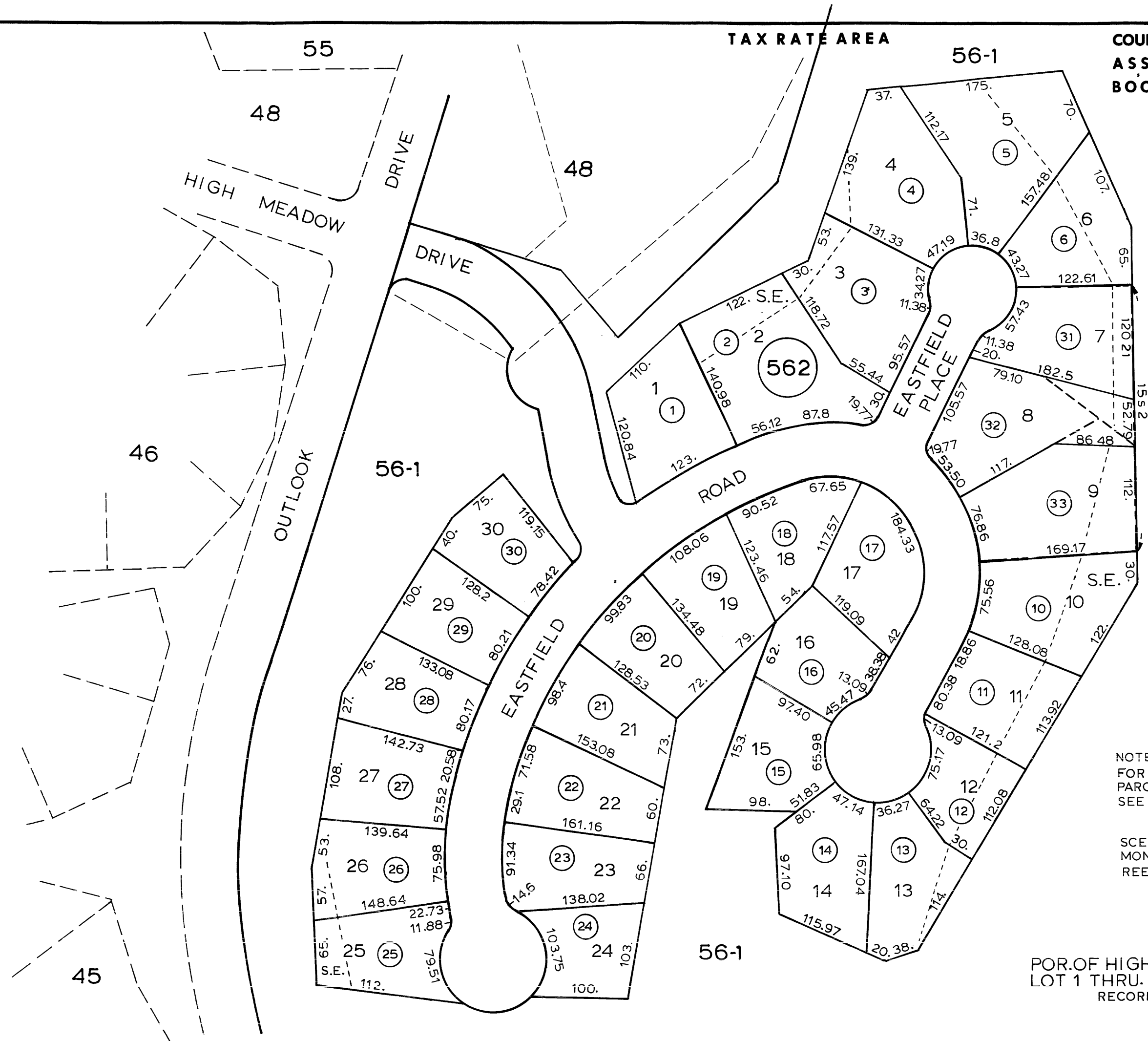
EASTFIELD ROAD

GREENFIELD PLACE

OUTLOOK DRIVE

OUTLOOK DRIVE

1" = 200 FT.



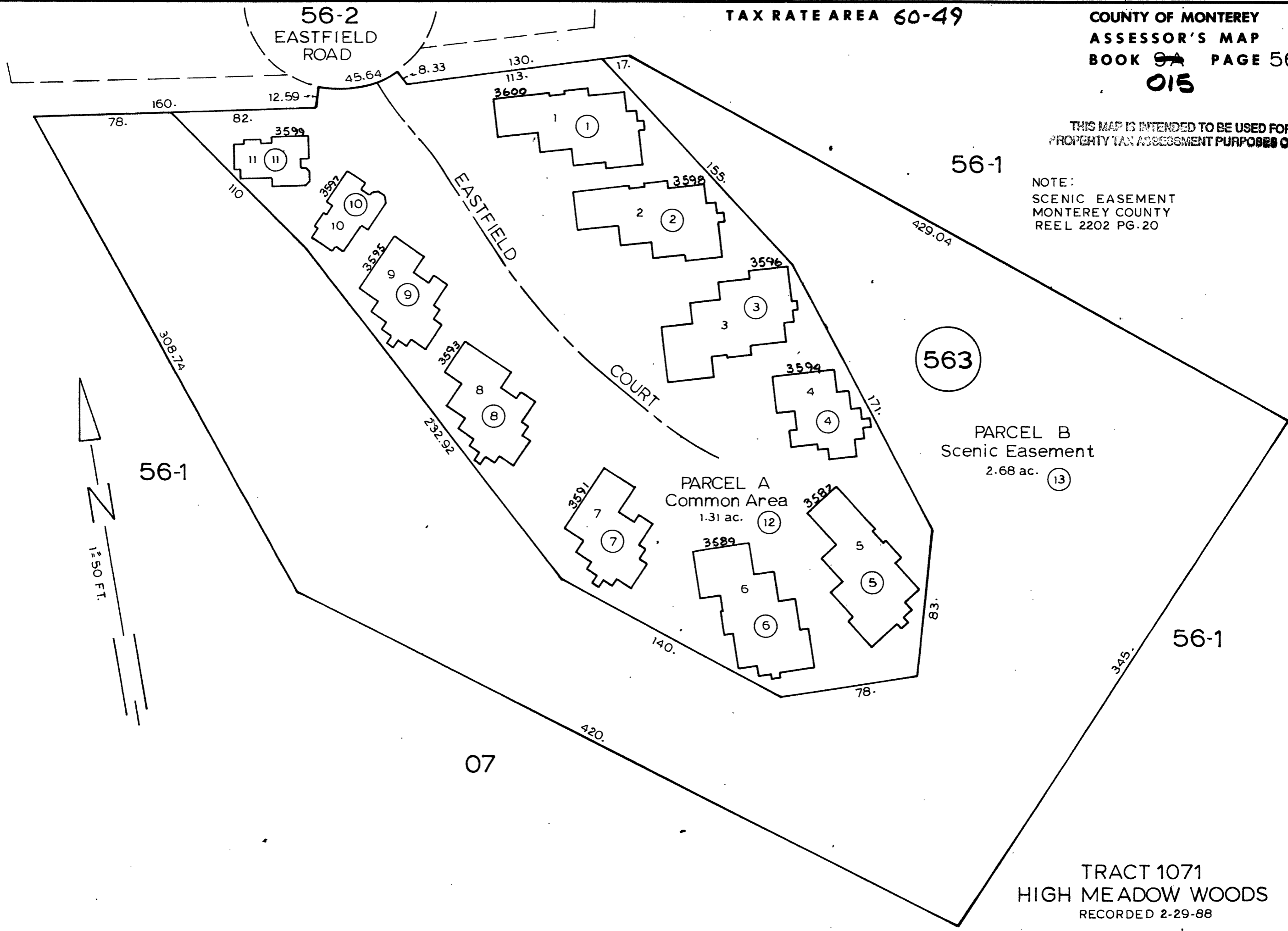
NOTE:
FOR LOTS 31, 32, 33, 34
PARCELS A, B, C
SEE PAGE 56-1

SCENIC EASEMENT
MONTEREY COUNTY
REEL 1934 PG. 547

POR. OF HIGH MEADOW NO. 2
LOT 1 THRU. 30 TRACT 1030
RECORDED 3-11-86

THIS MAP IS INTENDED TO BE USED FOR
PROPERTY TAX ASSESSMENT PURPOSES ONLY.

NOTE:
SCENIC EASEMENT
MONTEREY COUNTY
REEL 2202 PG. 20



TRACT 1071
HIGH MEADOW WOODS
RECORDED 2-29-88